

Patch to PDF User Manual

Thank you for choosing "Patch to PDF"! This user manual has been designed to help you make the most of our software and efficiently convert your patch files to the PDF format.

Please read this manual carefully to ensure a smooth and successful conversion process. If you have any further questions, do not hesitate to contact our support team.

We wish you success and enjoyment in using "Patch to PDF"!

Table of contents

1. Quick Guide
2. Manual

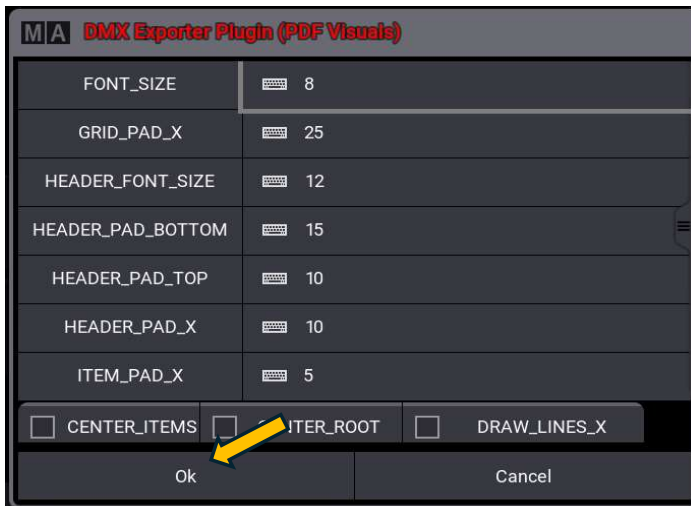
Please note that a PDF file can only be exported from grandMA3 OnPc software.
Export from grandMA3 hardware is not possible.

Quick Guide

1. Begin the export process by clicking on the plugin.



2. Within this menu, you can customize the design settings for the PDF file.
For a quick PDF creation, the default settings are sufficient. Click "OK" to proceed.



3. Final Export Settings

a. Path: Here, you can specify the location where the PDF will be saved. The default setting saves the file to the desktop.

b. Sort Mode: Choose the sorting option here.

c. Select Columns: Select all columns you wish to export.

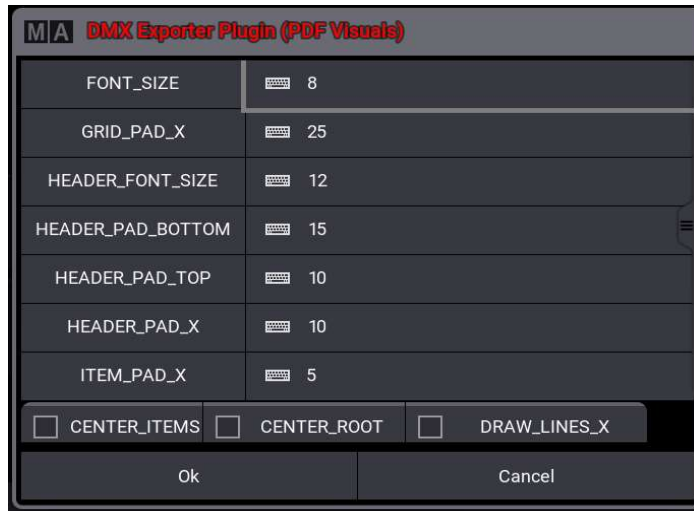


Manual

1. Begin the export process by clicking on the plugin.



2. Within this menu, you can customize the design settings for the PDF file.



Font Size: Here, you can adjust the font size. However, the font size also depends on the amount of information in a line. The more information needs to be displayed in a line, the smaller the font size will be.

Grid Pad X: Here, you can adjust the distance from the left edge of the page to the table.

Header Font Size: Adjusts the font size in the header.

Header Pad Bottom: Determines the distance between the header and the table.

Header Pad Top: Sets the distance between the header and the top of the page.

Header Pad X: Determines the distance between the header and the left page margin.

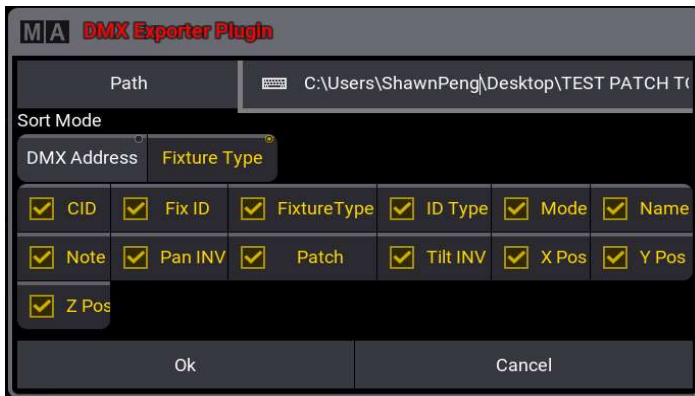
Item Pad X: Determines the distance between the information contained in the table and the left cell border

Center Items: Centers the table contents within the cells.

Center Root: Centers the column headers within the cells.

Draw Lines X: Adds horizontal lines to the table row by row.

3. Final Export Settings



Path: Here, you can specify the location where the PDF will be saved. The default setting saves the file to the desktop.

Sort Mode:

DMX Address: Sorts the entire table based on the used DMX universes and addresses. Fixture types are not considered in this sorting mode.

Fixture Type: Sorts the table first by fixture types, grouping individual fixture types together. These groups are then sorted based on DMX universes and DMX addresses within them.

Select Columns: Here, you can choose which information from the patch should be included and added to the PDF file.

Known Limitations

Please note that a PDF file can only be exported from grandMA3 OnPc software.

Export from grandMA3 hardware is not possible.

The Generated PDF file adheres to the specified PDF parameters and can always be viewed using Adobe Acrobat Reader. However, it has been observed that the preview display may not function correctly on some OSX systems. In this case, please use Adobe Acrobat Reader for viewing.